

# Lake Levels

## TRENT SEVERN WATERWAYS

2011- 2014

CEWF launched an initiative whereby individual member lake associations were encouraged to define 'preferred water levels' during the navigation season and new processes were implemented with TSW in 2014 with 12 lake associations in the County, HLCA being one of them.

2013 - record snowpack accumulation and record spring rainfall flood the TSW watershed system (flooding in Minden)

2019

At AGM Nick Mezzapelli presented the current high lake levels and highlighted that the spring melt off plus 150 millimeters of rain between April - May caused all lakes across the Trent Severn Waterway to reach record level highs. The Ministry had to perform a "controlled dam release" to avoid flooding of lakes and the Trent Severn Waterway banks. Over the past week water levels have continued to decline and quickly reached normal levels.

2021

Record minimal snowpack and moderate spring rainfall caused lower than normal lake levels. TSW applied additional "controlled dam release" throughout summer and helped to stabilize lake levels.



### TSW MANAGEMENT PLAN & PUBLIC CONSULTATION

From the TSW on their 10-year management plan - [click here](#)

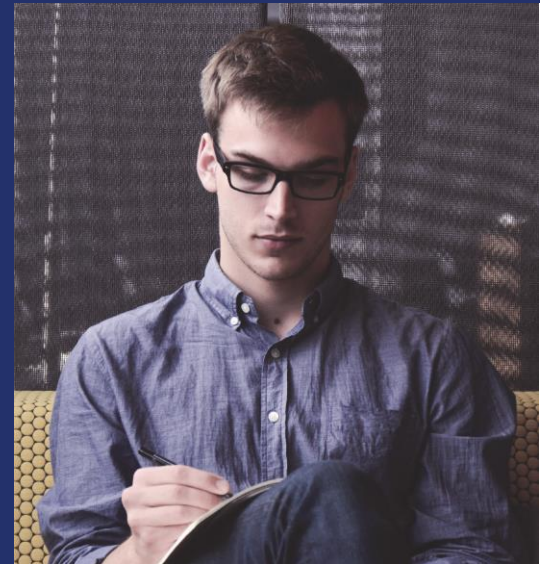
(Note that CEWF will be responding, and sharing that with members)

*"Parks Canada has created this space for you to share your feedback on a new draft management plan for the Trent-Severn Waterway National Historic Site. Your input and suggestions will shape the way we protect and present this special place over the coming years.*

From **April 4 - June 30**, we're asking the public to read our [Draft Management Plan](#) and share their feedback.

## Public Feedback

*Your feedback is important to Parks Canada and will go a long way towards shaping the Trent-Severn Waterway and Peterborough Lift Lock National Historic Sites Management Plan for the next 10 years. We appreciate you taking the time to provide your feedback. Please feel free to share this website with others who may have an interest in the Trent-Severn Waterway.*



### HLCA SUMMARY

Given the improved stabilization of lake water levels and TSW's forward looking management plan, the HLCA is optimistic that the following priorities will further improve preferred lake levels.

Section 3.5 - Operational realities on an antiquated infrastructure built a century ago.

Section 6 - Key Strategy 3: Effectively manage an evolved waterway in the 21st century.

- Note: Parks Canada, working with its partners, has solidly positioned the Trent-Severn Waterway as a world-renowned, vibrant, and sustainable destination that promotes outdoor recreation, low impact tourism and responsible development while preserving its cultural and natural heritage for future generations. Revenue generation should help in managing operational costs, new technology and dam repairs.

**Have a read  
and have your  
voice heard.**

**DRAFT  
MANAGEMENT  
PLAN, 2022**